



2141 Second Avenue S.W.
 Cullman, Alabama 35055
 800.438.1606 Toll Free
 256.739.6827 Tel. | 256.739.5657 Fax

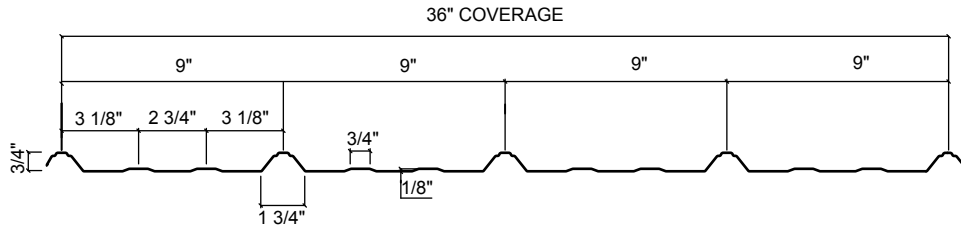
17600 Badtke Road
 Hockley, TX 77447
 1.866.749.COMP (2667) Toll Free
 281.213.6100 Tel. | 281.213.6101 Fax

3387 Davey Allison Blvd.
 Hueytown, AL 35023
 1.877.887.4247 Toll Free
 205.744.1561 Tel. | 205.744.1562 Fax

www.inlandbuildings.com

PANEL SQUARE FOOTAGE CHART

SBS 369



NUMBER OF SQUARE FEET PER PANEL - BASED ON 38 1/4" WIDE PANEL COVERING 36"

	0"	1"	2"	3"	4"	5"	6"	7"	8"	9"	10"	11"
1'	3.17	3.43	3.69	3.96	4.22	4.49	4.75	5.01	5.28	5.54	5.81	6.07
2'	6.33	6.60	6.86	7.12	7.39	7.65	7.92	8.18	8.44	8.71	8.97	9.24
3'	9.50	9.76	10.03	10.29	10.56	10.82	11.08	11.35	11.61	11.87	12.14	12.40
4'	12.67	12.93	13.19	13.46	13.72	13.99	14.25	14.51	14.78	15.04	15.31	15.57
5'	15.83	16.10	16.36	16.62	16.89	17.15	17.42	17.68	17.94	18.21	18.47	18.74
6'	19.00	19.26	19.53	19.79	20.06	20.32	20.58	20.85	21.11	21.37	21.64	21.90
7'	22.17	22.43	22.69	22.96	23.22	23.49	23.75	24.01	24.28	24.54	24.81	25.07
8'	25.33	25.60	25.86	26.12	26.39	26.65	26.92	27.18	27.44	27.71	27.97	28.24
9'	28.50	28.76	29.03	29.29	29.56	29.82	30.08	30.35	30.61	30.87	31.14	31.40
10'	31.67	31.93	32.19	32.46	32.72	32.99	33.25	33.51	33.78	34.04	34.31	34.57
11'	34.83	35.10	35.36	35.62	35.89	36.15	36.42	36.68	36.94	37.21	37.47	37.74
12'	38.00	38.26	38.53	38.79	39.06	39.32	39.58	39.85	40.11	40.37	40.64	40.90
13'	41.17	41.43	41.69	41.96	42.22	42.49	42.75	43.01	43.28	43.54	43.81	44.07
14'	44.33	44.60	44.86	45.12	45.39	45.65	45.92	46.18	46.44	46.71	46.97	47.24
15'	47.50	47.76	48.03	48.29	48.56	48.82	49.08	49.35	49.61	49.87	50.14	50.40
16'	50.67	50.93	51.19	51.46	51.72	51.99	52.25	52.51	52.78	53.04	53.31	53.57
17'	53.83	54.10	54.36	54.62	54.89	55.15	55.42	55.68	55.94	56.21	56.47	56.74
18'	57.00	57.26	57.53	57.79	58.06	58.32	58.58	58.85	59.11	59.37	59.64	59.90
19'	60.17	60.43	60.69	60.96	61.22	61.49	61.75	62.01	62.28	62.54	62.81	63.07
20'	63.33	63.60	63.86	64.12	64.39	64.65	64.92	65.18	65.44	65.71	65.97	66.24
21'	66.50	66.76	67.03	67.29	67.56	67.82	68.08	68.35	68.61	68.87	69.14	69.40
22'	69.67	69.93	70.19	70.46	70.72	70.99	71.25	71.51	71.78	72.04	72.31	72.57
23'	72.83	73.10	73.36	73.62	73.89	74.15	74.42	74.68	74.94	75.21	75.47	75.74
24'	76.00	76.26	76.53	76.79	77.06	77.32	77.58	77.85	78.11	78.37	78.64	78.90
25'	79.17	79.43	79.69	79.96	80.22	80.49	80.75	81.01	81.28	81.54	81.81	82.07
26'	82.33	82.60	82.86	83.12	83.39	83.65	83.92	84.18	84.44	84.71	84.97	85.24
27'	85.50	85.76	86.03	86.29	86.56	86.82	87.08	87.35	87.61	87.87	88.14	88.40
28'	88.67	88.93	89.19	89.46	89.72	89.99	90.25	90.51	90.78	91.04	91.31	91.57
29'	91.83	92.10	92.36	92.62	92.89	93.15	93.42	93.68	93.94	94.21	94.47	94.74
30'	95.00	95.26	95.53	95.79	96.06	96.32	96.58	96.85	97.11	97.37	97.64	97.90
31'	98.17	98.43	98.69	98.96	99.22	99.49	99.75	100.01	100.28	100.54	100.81	101.07
32'	101.33	101.60	101.86	102.12	102.39	102.65	102.92	103.18	103.44	103.71	103.97	104.24
33'	104.50	104.76	105.03	105.29	105.56	105.82	106.08	106.35	106.61	106.87	107.14	107.40
34'	107.67	107.93	108.19	108.46	108.72	108.99	109.25	109.51	109.78	110.04	110.31	110.57
35'	110.83	111.10	111.36	111.62	111.89	112.15	112.42	112.68	112.94	113.21	113.47	113.74
36'	114.00	114.26	114.53	114.79	115.06	115.32	115.58	115.85	116.11	116.37	116.64	116.90
37'	117.17	117.43	117.69	117.96	118.22	118.49	118.75	119.01	119.28	119.54	119.81	120.07
38'	120.33	120.60	120.86	121.12	121.39	121.65	121.92	122.18	122.44	122.71	122.97	123.24
39'	123.50	123.76	124.03	124.29	124.56	124.82	125.08	125.35	125.61	125.87	126.14	126.40
40'	126.67	126.93	127.19	127.46	127.72	127.99	128.25	128.51	128.78	129.04	129.31	129.57



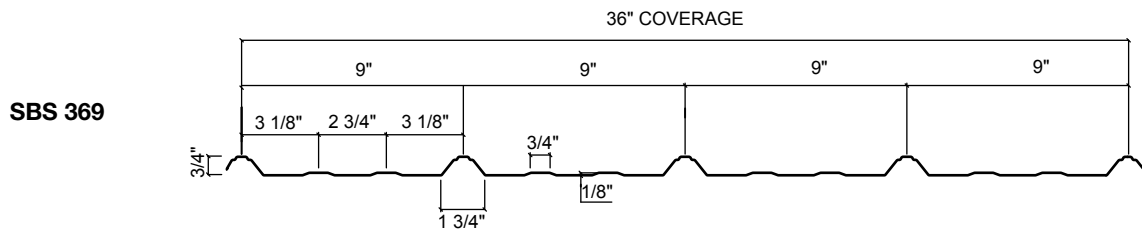
2141 Second Avenue S.W.
 Cullman, Alabama 35055
 800.438.1606 Toll Free
 256.739.6827 Tel. | 256.739.5657 Fax

17600 Badtke Road
 Hockley, TX 77447
 1.866.749.COMP (2667) Toll Free
 281.213.6100 Tel. | 281.213.6101 Fax

3387 Davey Allison Blvd.
 Hueytown, AL 35023
 1.877.887.4247 Toll Free
 205.744.1561 Tel. | 205.744.1562 Fax

www.inlandbuildings.com

PANEL PROFILE SELECTIONS



PRICE PER SQUARE								
FINISH	BASE METAL	GAUGE	WEIGHT PER SQUARE	QUANTITY IN SQUARES				
				0 - 19	20 - 49	50 - 99	100 - 299	300+
Clear Acrylic	GALVALUME®	29	65	112.35	107.85	103.55	99.40	97.40
SMP Standard Colors	GALVALUME®	29	65	143.65	137.90	132.40	127.10	124.55
Clear Acrylic	GALVALUME®	26	95	134.80	126.70	119.10	111.95	109.70
SMP Standard Colors	GALVALUME®	26	95	178.95	168.20	158.10	148.60	145.60

Consult SBS **Technical Manual** for proper product application, design details and other product information.

Clear Acrylic Coated Galvalume® coating is subject to variances in spangle from coil to coil which may result in noticeable shade variation in installed panels. Clear Acrylic Coated Galvalume® coating is also subject to differential weathering after panel installation. Panels may appear to be different shades due to this weathering characteristic. If a consistent appearance is required, SBS recommends that pre-painted panels be used in lieu of Clear Acrylic Coated Galvalume®. Shade variation in panels manufactured from Clear Acrylic Coated Galvalume® coated material do not diminish the structural integrity of the product. These shade variations should be anticipated and are not a cause for rejection.

PANEL PRICING NOTES:

1. GALVALUME® base metal is in conformance with ASTM A792 Grade 80, Coating Class AZ55 if bare, Coating Class AZ50 if painted.
2. Cutting charge for panels less than 4'-0" in length is \$1.00 per panel.
3. Panel pricing is based on a 38" panel width.
4. Yield strength is 80,000 PSI on 29 and 26 gauge panels.
5. Length tolerance is plus or minus 1/4" of ordered length on all profiles.
6. Clear acrylic-coated GALVALUME® is GALVALUME® coated with a thin acrylic film intended to increase its resistance to fingerprinting and handling marks and eliminate the use of oil in the forming process. It is not a warranted film and may discolor while weathering.

PACKAGING COSTS:

1. Maximum 3000 lbs. per bundle, unless specified otherwise by customer.
2. Block and band with no cover sheet..... \$10.00
3. Block and band with cover sheet top only \$1.50/Linear Foot.
4. Block and band with cover sheet top and bottom \$2.70/Linear Foot.
5. L.T.L. Crating..... \$3.40/Linear Foot.