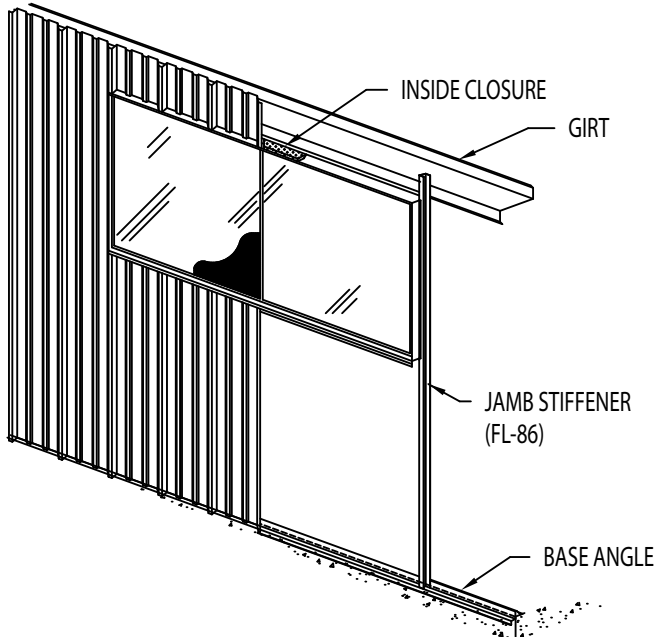


HORIZONTAL SLIDE WINDOWS

SIZE	AVAILABLE GLAZING				AVAILABLE FINISH	
	DSB CLEAR	OBSCURE	INSULATED	BRONZE TINTED	MILL ALUM	BRONZE PAINTED
3030	STANDARD	OPTIONAL	OPTIONAL	OPTIONAL	STANDARD	OPTIONAL
4030	STANDARD	OPTIONAL	OPTIONAL	OPTIONAL	STANDARD	OPTIONAL
6030	STANDARD	OPTIONAL	OPTIONAL	OPTIONAL	STANDARD	OPTIONAL

CHANNEL FRAMING (NOT SHOWN) IS REQUIRED AT WINDOW LOCATION WHEN LINER PANEL IS REQUIRED.

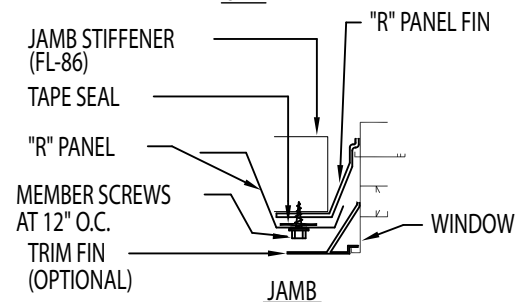
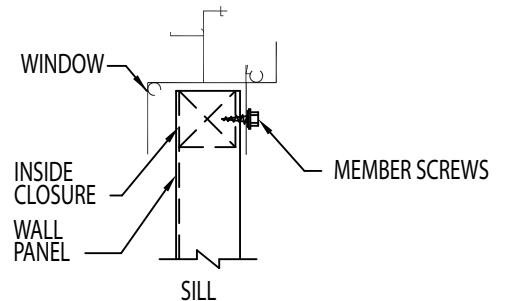
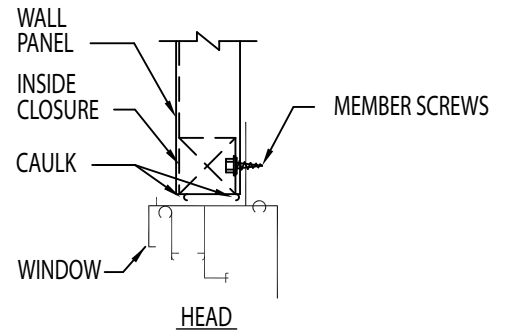


ERECTION:

1. ALL WINDOWS ARE FURNISHED FOR FIELD LOCATION WITH JAMBS LOCATED AT MAJOR RIBS. PANELS ABOVE AND BELOW WINDOW MUST BE FIELD CUT AND MAY BE CUT FROM A FULL LENGTH PANEL.
2. LOCATE JAMB STIFFENERS THE WIDTH OF THE WINDOW. JAMB STIFFENERS MUST BE LOCATED SO AS TO OCCUR AT MAJOR RIBS.
3. FOR BUILDINGS THAT HAVE A GIRT AT 3'-6" ELEVATION. THE JAMB STIFFENERS WILL BE OMITTED.
4. LOCATE WINDOW AND ATTACH TEMPORARILY WITH POP RIVETS. POP RIVETS ARE NOT INTENDED FOR ANY PURPOSE AFTER INSTALLATION OF WALL PANELS IS COMPLETE.
5. USING STANDARD PROCEDURE, ERECT WALL PANELS UP TO WINDOW LOCATION. CUT A 3'-0" SECTION FROM A FULL LENGTH PANEL AND INSTALL SHORT PANELS ABOVE AND BELOW WINDOW. BE SURE THAT FILLER STRIPS ARE POSITIONED BEFORE ATTACHING PANELS. CONTINUE WITH STANDARD WALL ERECTION PROCEDURE.
6. CAULK CONTINUOUSLY ALONG WINDOW HEADER TO INSURE A WATER TIGHT INSTALLATION.

GENERAL NOTES:

1. ALUMINUM HORIZONTAL SLIDE WINDOWS SHALL BE SELF-FLASHING UNITS FABRICATED FROM 6030 ALLOY, T5 TEMPER HARDNESS.
2. FINISHES ARE STANDARD MILL, OR BRONZE PAINTED UPON REQUEST.
3. ALL WINDOWS SHALL BE FURNISHED WITH DOUBLE STRENGTH (D.B.S.) CLEAR GLASS AS STANDARD. WITH OBSCURE, INSULATED AND BRONZE TINTED AS AVAILABLE OPTIONS.
4. NYLON ROLLERS WILL BE ATTACHED FOR A SMOOTH SLIDING ACTION.
5. HALF SCREENS SHALL BE FURNISHED AS STANDARD FOR ALL WINDOWS.



ALUMINUM HORIZONTAL SLIDE WINDOW IN "R" PANEL WALL

DRAWING NO.

D25