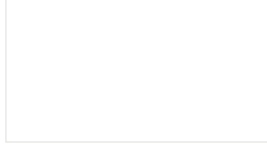




BUILDINGS

COLOR CHART

SILICONE POLYESTER - SMP



Polar White PPOL*



Light Stone



Ash Gray



Desert Sand



Charcoal Gray



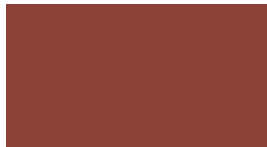
Burnished Slate



Saddle Tan



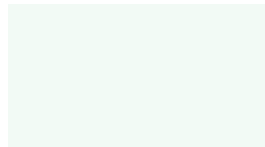
Hawaiian Blue



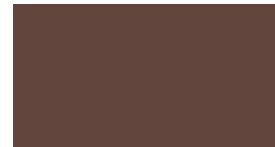
Rustic Red



Fern Green



Solar White



Koko Brown



Evergreen



Aztec Gold



Crimson Red



Colony Green

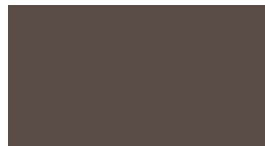
FLUOROPOLYMER KYNAR 500®



Regal Red



Gallery Blue



Medium Bronze



Snow White



Slate Gray



Almond



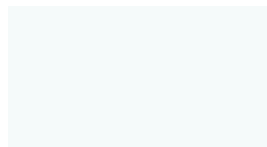
Classic Green



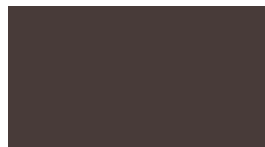
Brownstone



Colonial Red



Bone White



Midnight Bronze



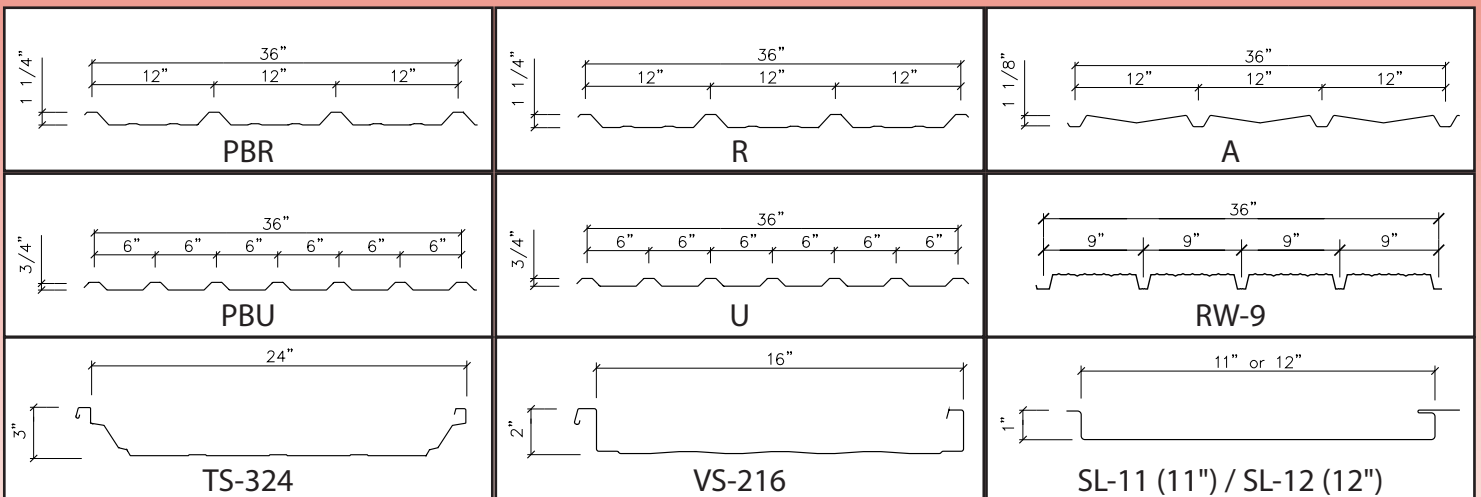
All colors are Energy Star® certified.

These color samples are as close as possible to the actual colors offered within the limitations of color-chip reproduction.

**Polar White is a premium polyester product (PPOL) not an SMP.*

PROFILE	29 Gauge		26 Gauge				24 Gauge			22 Gauge	
	Galvalume®	SMP	Galvalume®	SMP	Commodity	Kynar 500®	Galvalume®	SMP	Kynar 500®	Galvalume®	SMP
PBR			●	●		●	●	1	●	●	5
R	●				●						
PBU			●	●		●	●	1	●	●	5
U	●				●						
A			●	●		●	●	1	●	●	5
RW-9				6							
TS-324							●	2	●		
VS-216							●	2	●		
SL-11/SL-12							4	3	4		

1. Available in Polar White Only
2. Available in Solar White Only
3. SL-12 - Available in Polar White Only
4. SL-11 - Available in KYNAR or GALVALUME
5. Inquire for Polar White
6. Available in Polar White, Light Stone, Ash Gray and Sandle Tan Only



Kynar 500® is a registered trademark of Arkema, Inc.
Galvalume is a registered trademark of BIEC International, Inc.
© Inland All rights reserved

valspar



www.inlandbuildings.com
sales@inlandbuildings.com

Inland is a Schulte Building Systems Company

TEXAS

17600 Badtke Road
Hockley, TX 77447
Phone: 281.213.6100
Fax: 281.213.6101
1.866.749.COMP

ALABAMA

3387 Davey Allison Blvd.
Hueytown, AL 35023
Phone: 205.744.1561
Fax: 205.744.1562
1.877.887.4247

2141 Second Ave. SW
Cullman, AL 35055
Phone: 256.739.6827
Fax: 800.438.1626
1.800.438.1606